

STATION #2

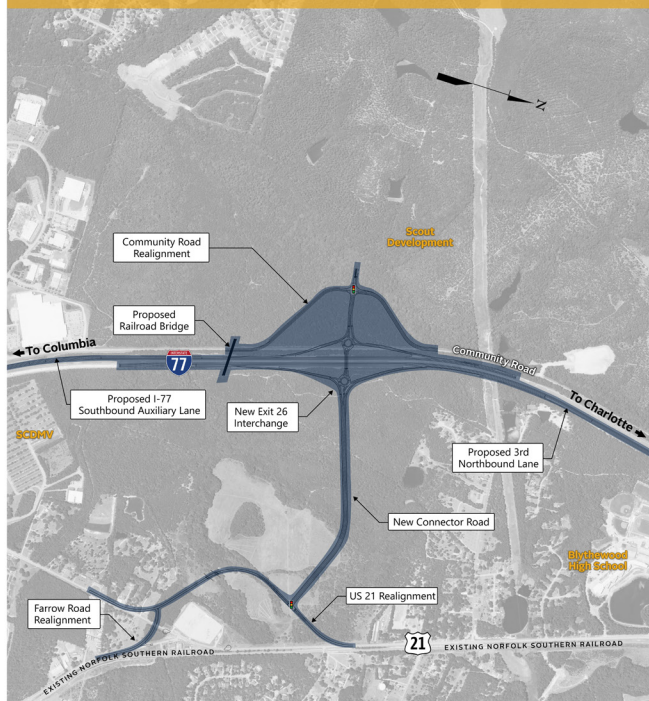
Preferred Interchange Planning & Design

Station #2 - Preferred Interchange Planning & Design

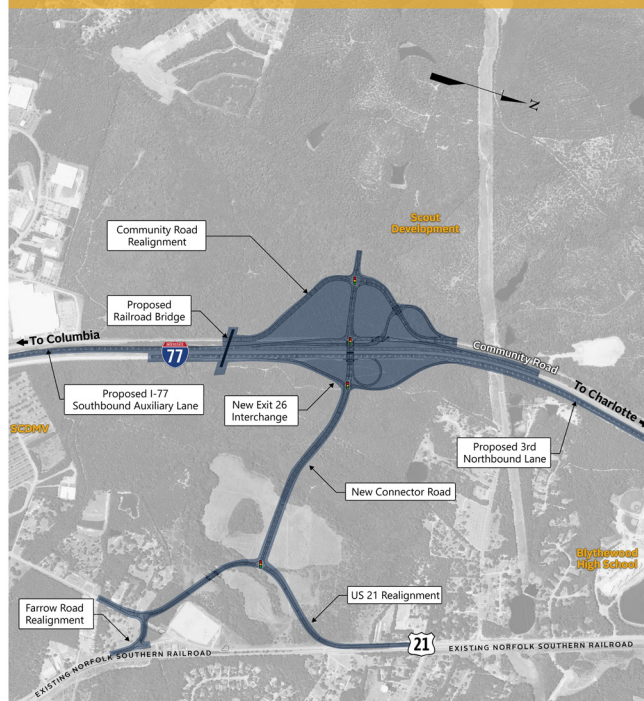
I-77 Exit 26 New Interchange Alternative Comparison



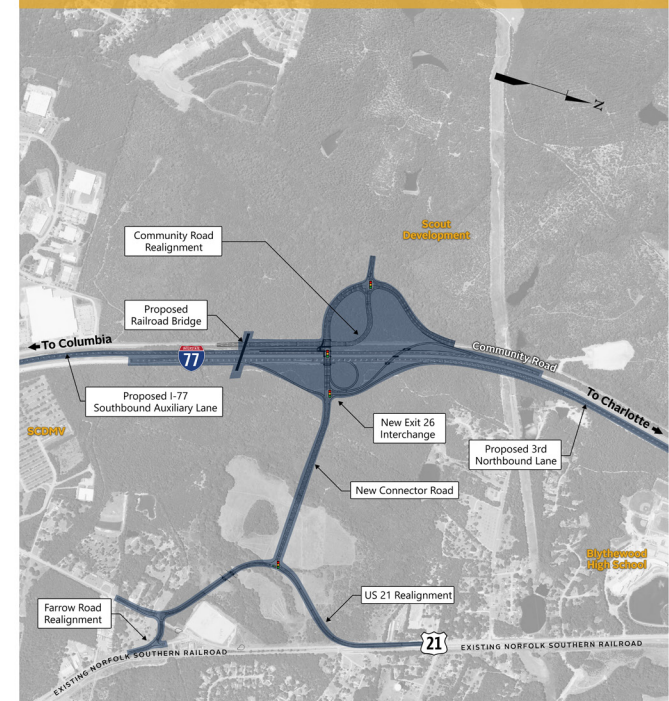
Original Design: Dogbone Interchange



Alternative 2: Dual Ramp Diamond Interchange

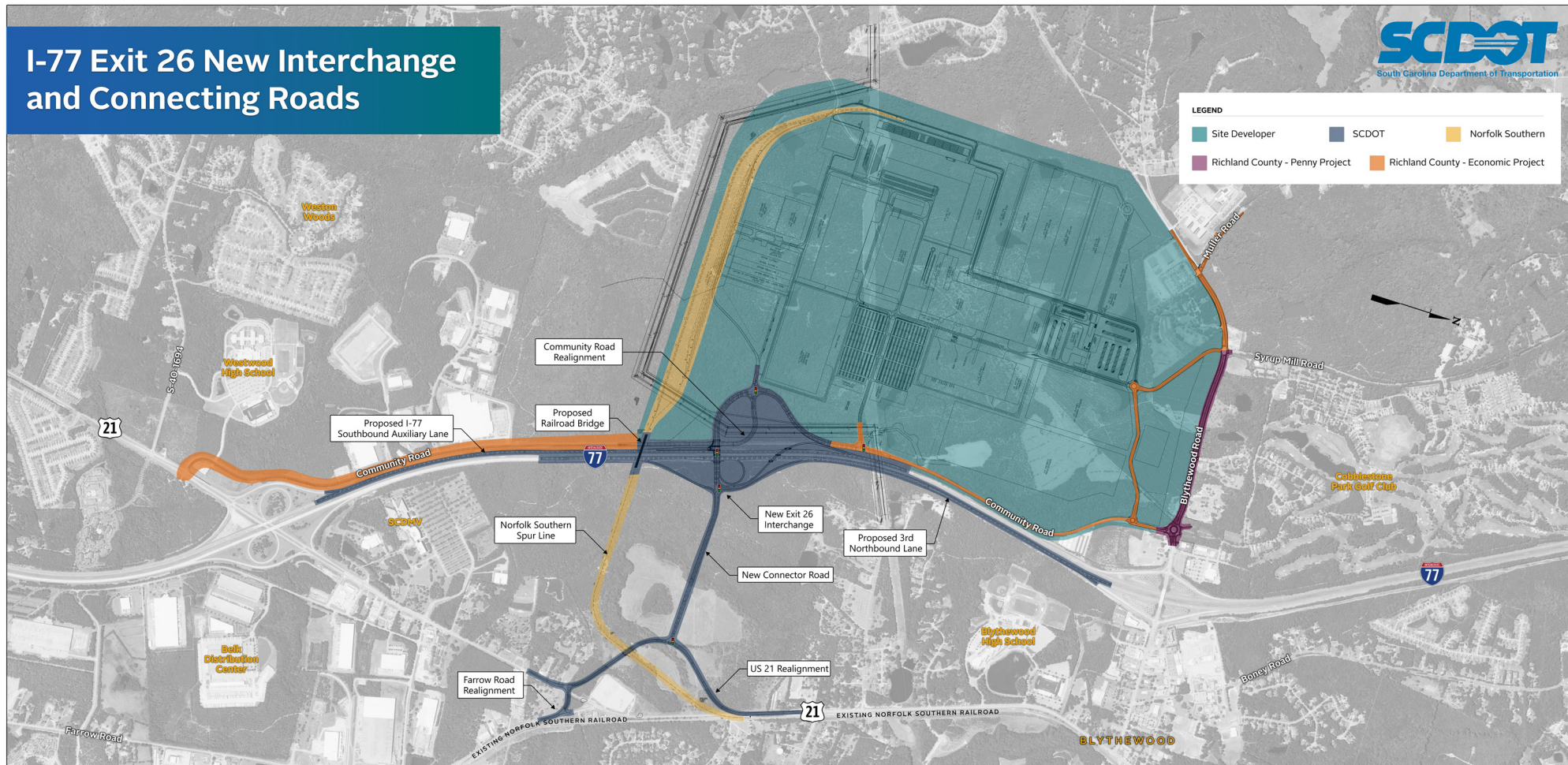


Alternative 3: Offset Interchange



Station #2 - Preferred Interchange Planning & Design

I-77 Exit 26 New Interchange and Connecting Roads

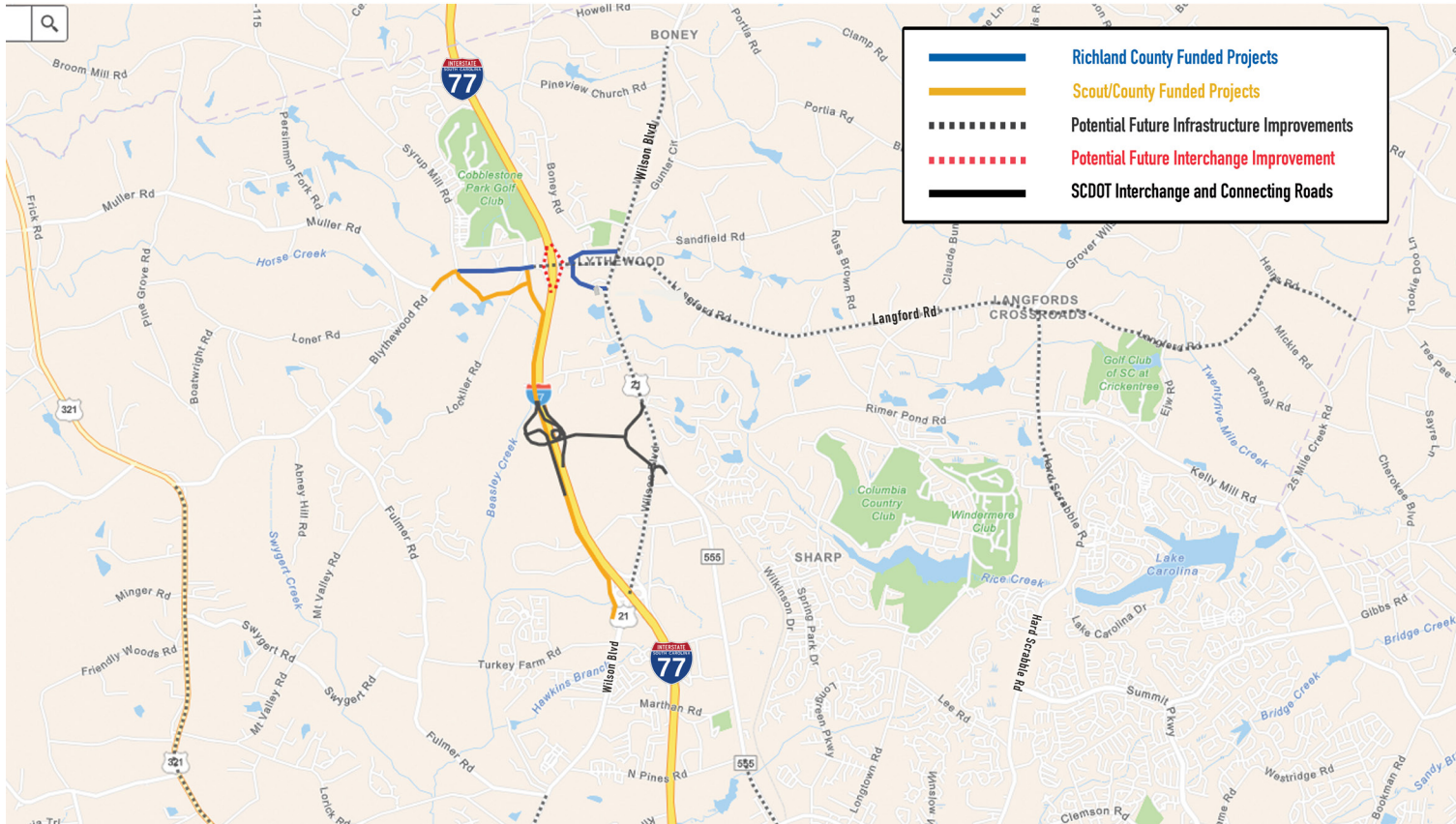


STATION #3

Local Traffic Improvements

Station #3 - Local Traffic Improvements

Planned Infrastructure Improvements



STATION #4

Railroad Information

Norfolk Southern

Station #4 - Railroad Information



ILLUSTRATIVE CROSS SECTION EXHIBIT

PROJECT CONNECT

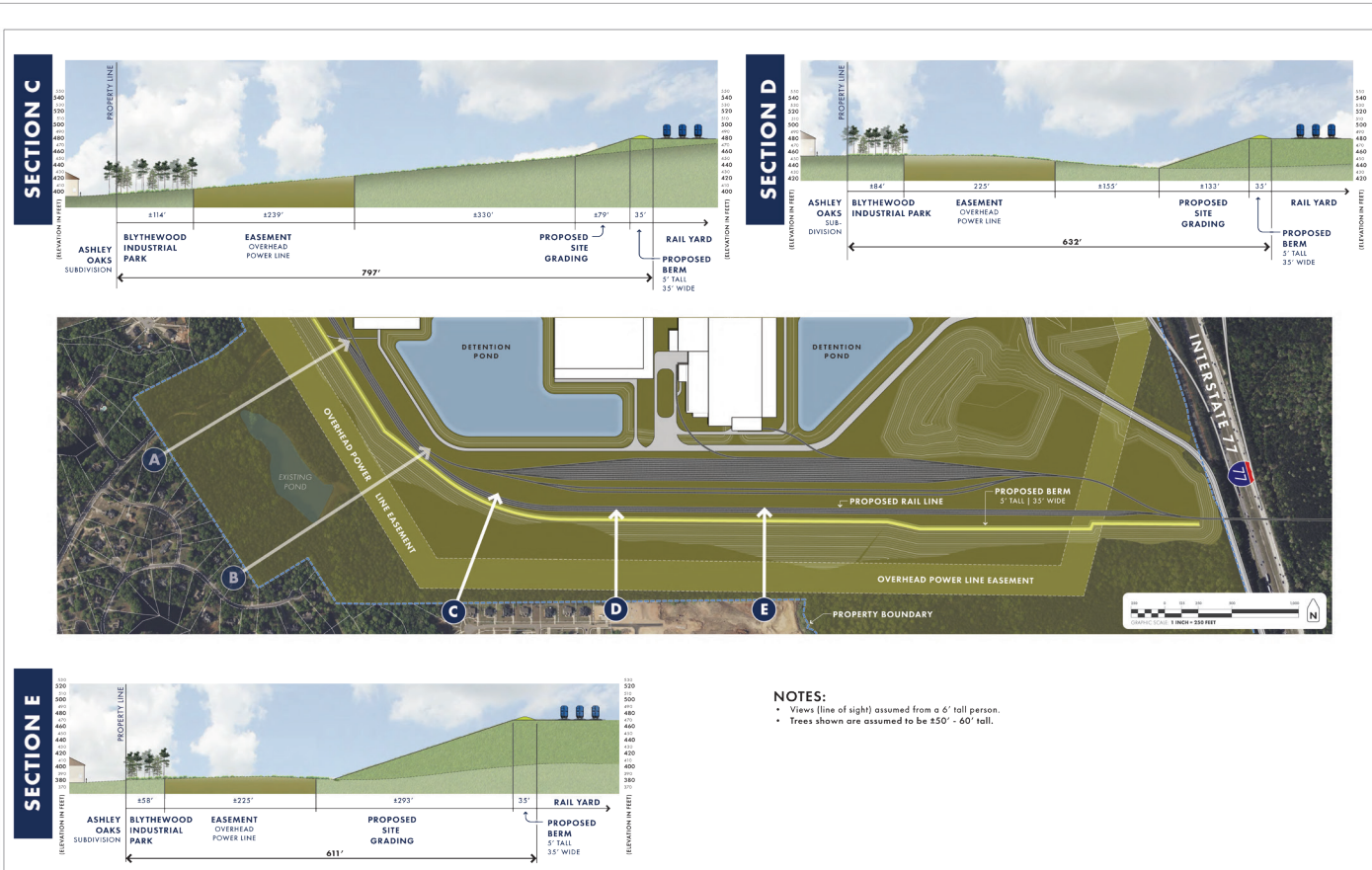
BLYTHWOOD INDUSTRIAL PARK | RICHLAND COUNTY | SOUTH CAROLINA

APRIL 2023



All images described herein are artist's conceptual renderings, which are based upon preliminary development plans, and are subject to change without notice. Structures and materials shown may not be approved or shown solely for illustrative purposes. No guarantee or representation is made that the existing or future views of the project and surrounding areas depicted by artist's conceptual renderings, will be provided as if provided, will be as depicted.

Station #4 - Railroad Information



ILLUSTRATIVE CROSS SECTION EXHIBIT

PROJECT CONNECT

BLYTHEWOOD INDUSTRIAL PARK | RICHLAND COUNTY | SOUTH CAROLINA

APRIL 2023



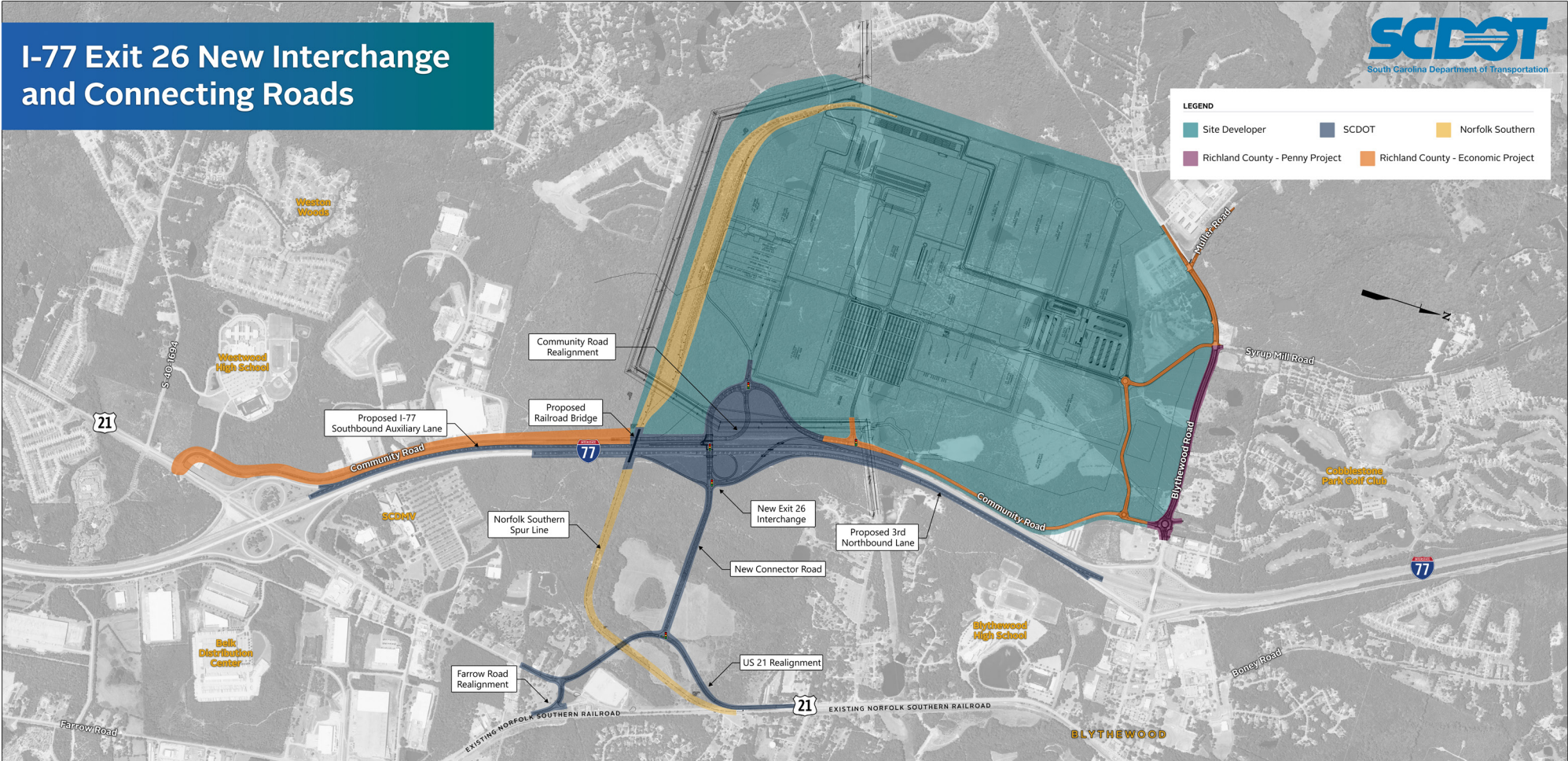
All images depicted herein are artist's conceptual renderings, which are based upon preliminary development plans, and are subject to change without notice. Specific and detailed drawings, used to guide and inform utility location and placement, for placement or construction when used are made for existing or future views of the project and surrounding areas depicted by artist's conceptual renderings, will be provided as if provided, will be as required.

Station #4 - Railroad Information

I-77 Exit 26 New Interchange and Connecting Roads



LEGEND					
■	Site Developer	■	SCDOT	■	Norfolk Southern
■	Richland County - Penny Project	■	Richland County - Economic Project		

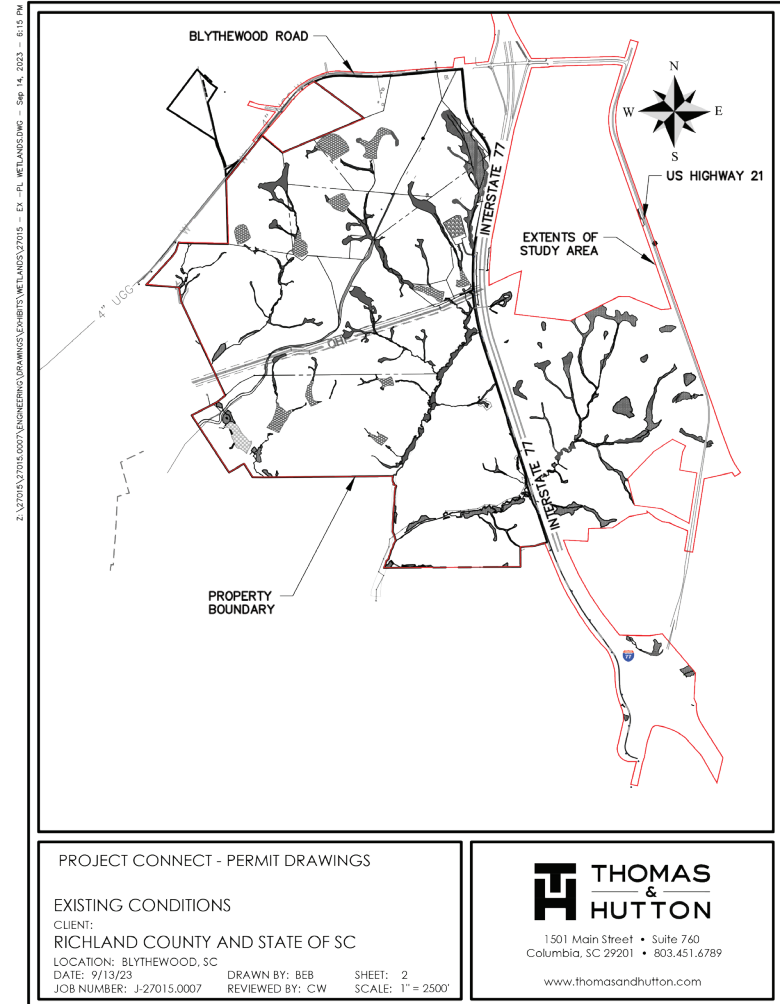


STATION #5

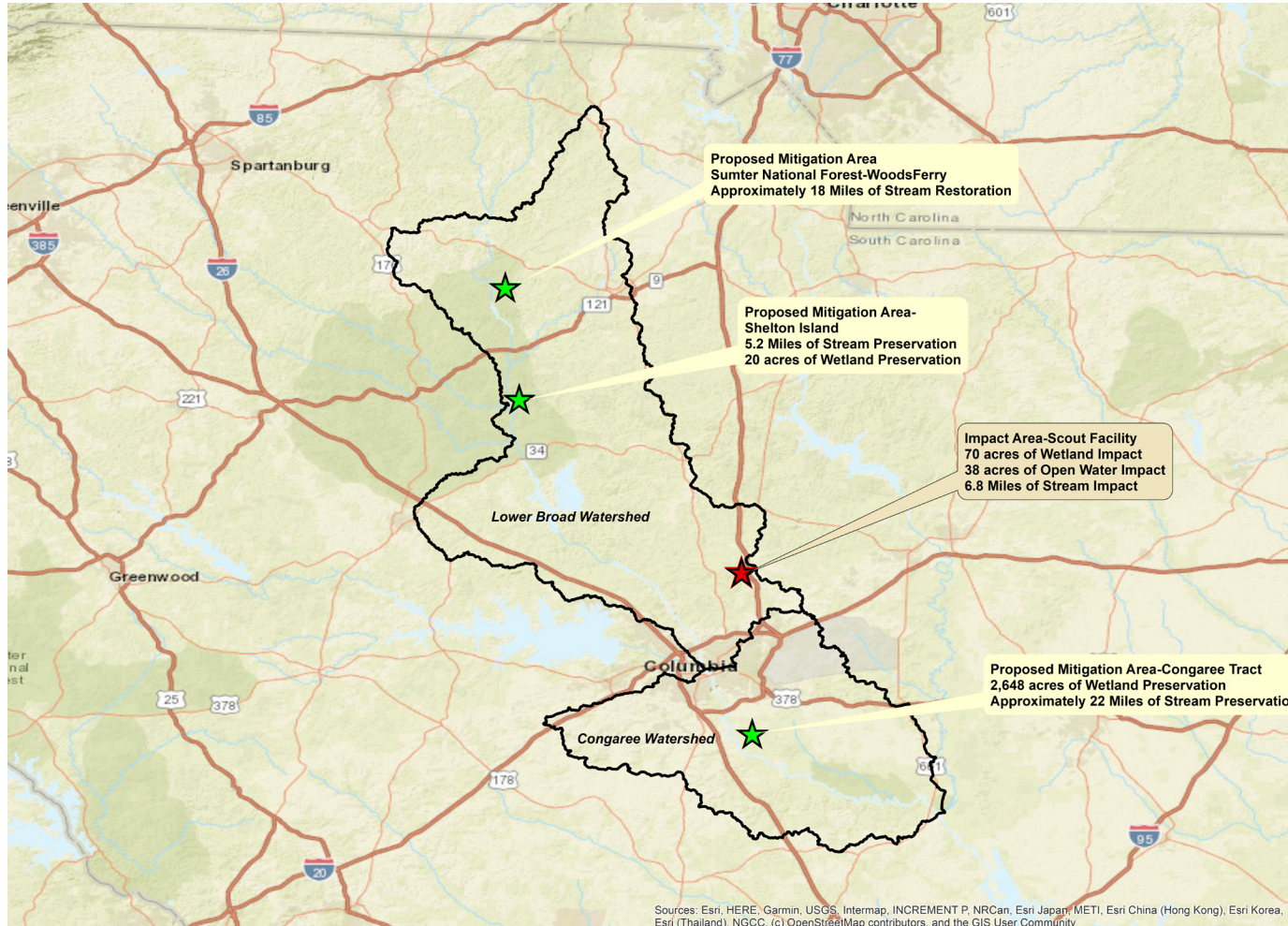
Environmental Impacts



Station #5 - Environmental Impacts



Station #5 - Environmental Impacts



COMMENT

Scan to submit
a comment.



To submit a comment
online visit:
bit.ly/464UQZ9



Complete a comment
form before you
leave today.

Comments will be accepted through **October 18, 2023.**

 TeamSC & Richland County